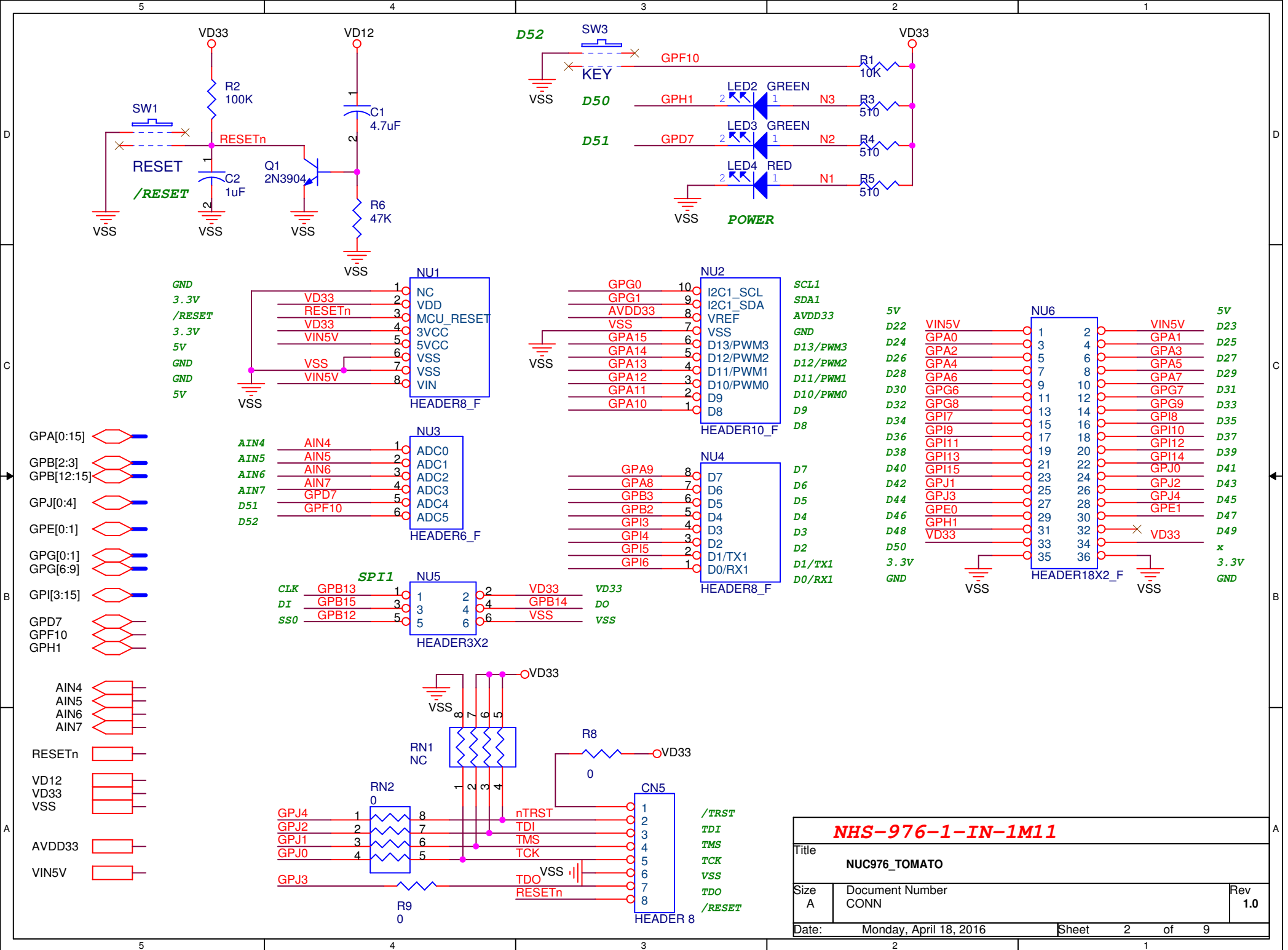


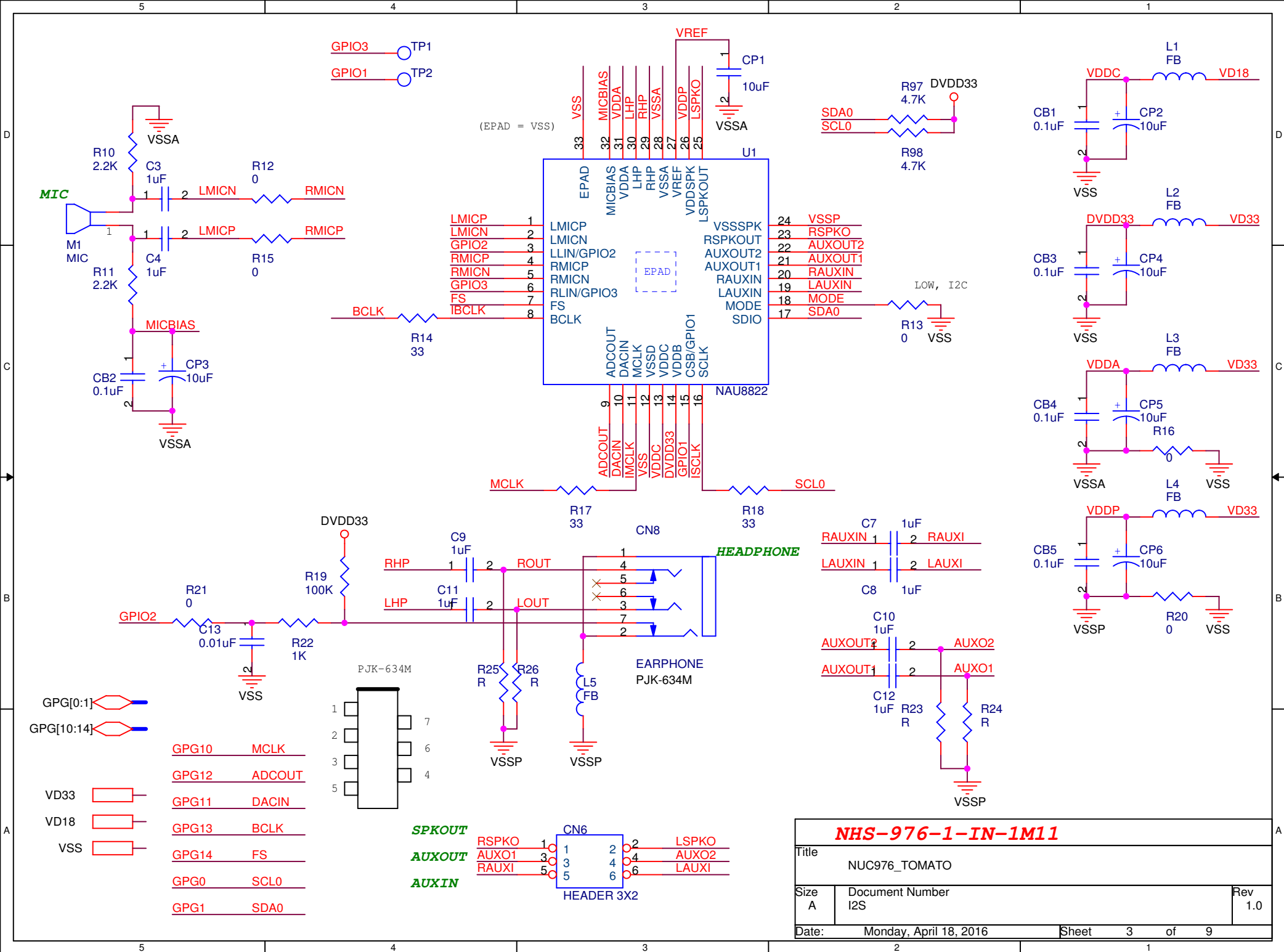
NHS-976-1-IN-1M11

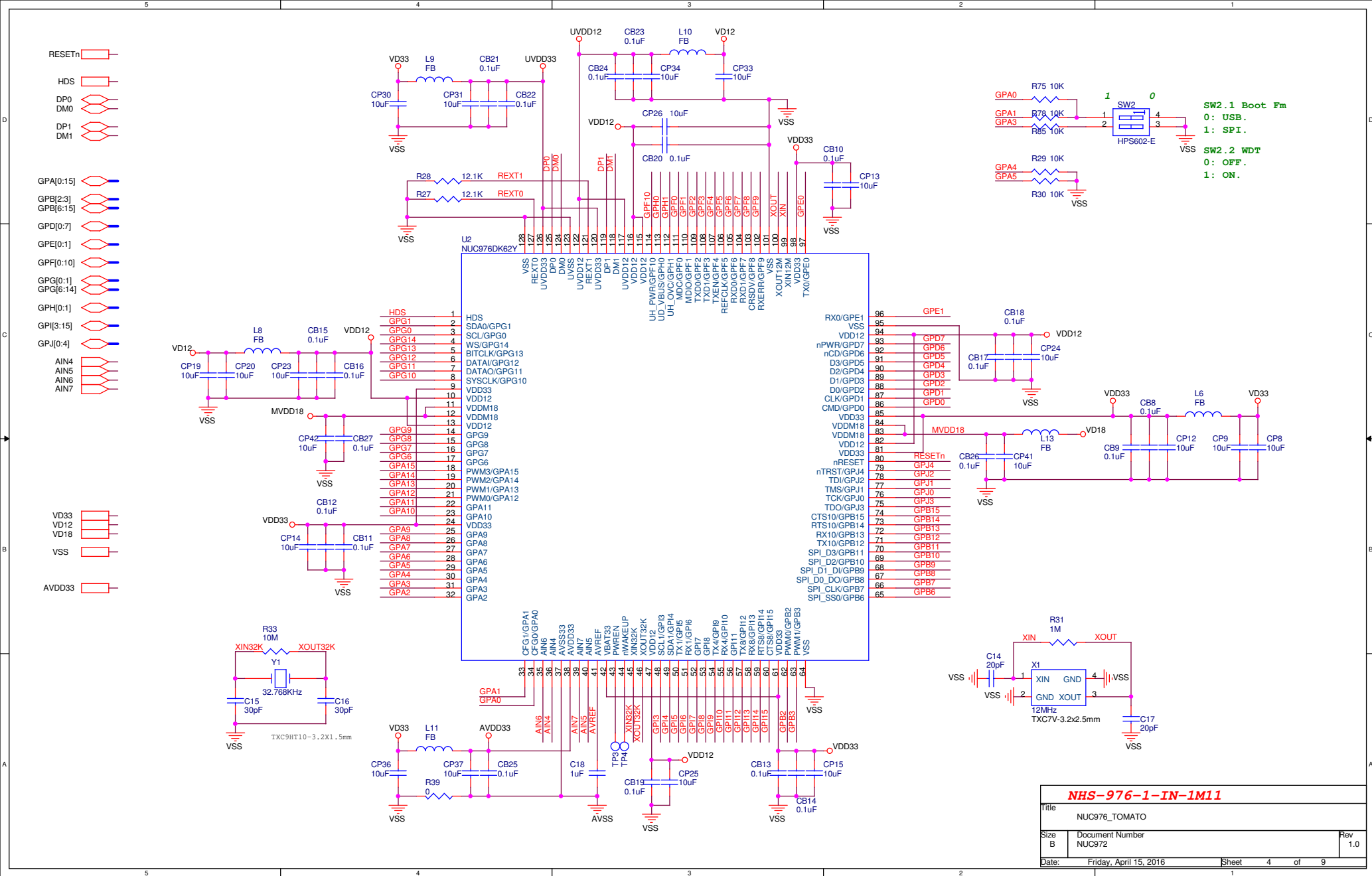
Title		
NUC976_TOMATO		
Size	Document Number	Rev
A	BLOCK	1.0
Date:	Thursday, April 14, 2016	Sheet 1 of 9

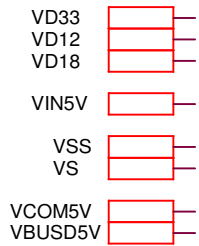


NHS-976-1-IN-1M11

Title		
NUC976_TOMATO		
Size	Document Number	Rev
A	CONN	1.0
Date: Monday, April 18, 2016 Sheet 2 of 9		







<i>NHS-976-1-IN-1M11</i>			
Title NUC976_TOMATO			
Size A	Document Number POWER		Rev 1.0
Date:	Friday, April 15, 2016	Sheet	5 of 9

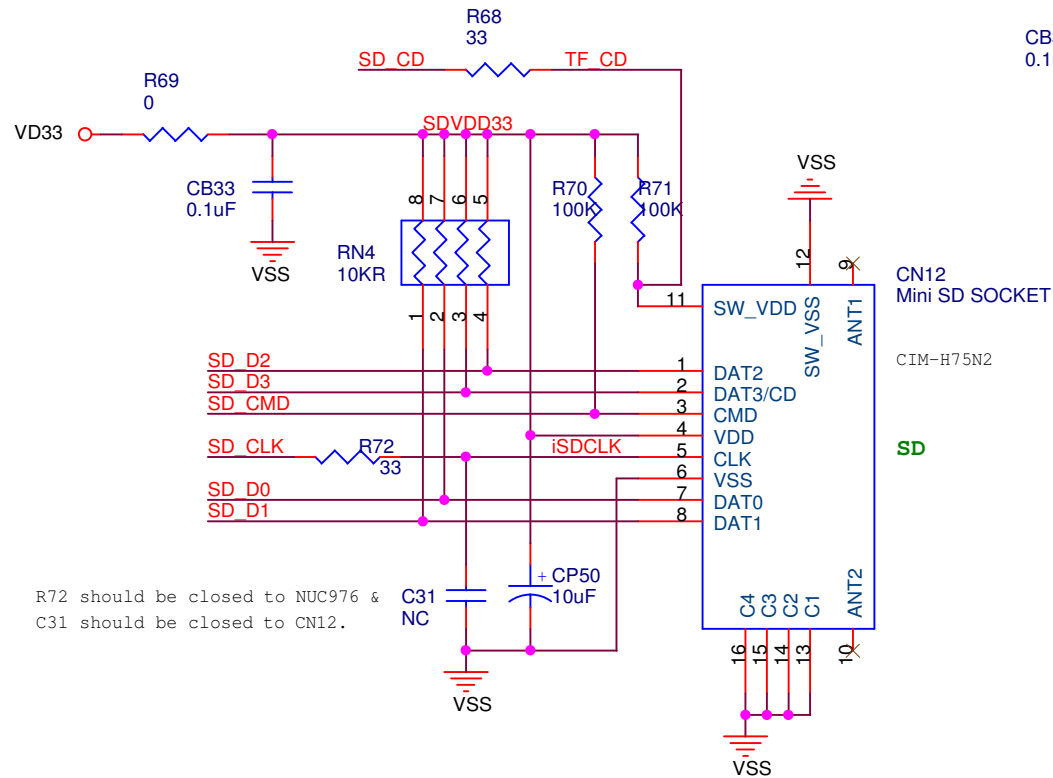
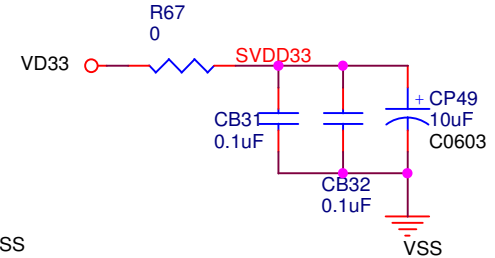
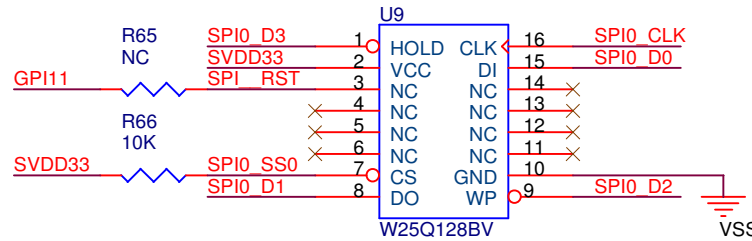
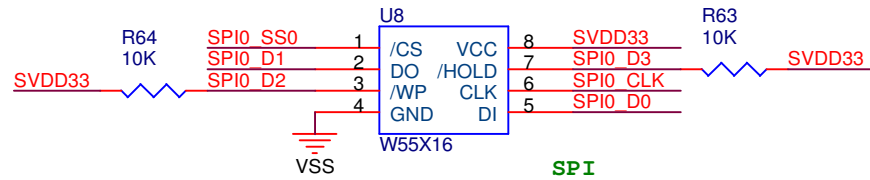
GPB[6:11]

GPB6 SPI0_SS0
GPB7 SPI0_CLK
GPB8 SPI0_D0
GPB9 SPI0_D1
GPB10 SPI0_D2
GPB11 SPI0_D3

VD33
VSS

GPI11
GPD[0:6]

GPD0 SD_CMD
GPD1 SD_CLK
GPD2 SD_D0
GPD3 SD_D1
GPD4 SD_D2
GPD5 SD_D3
GPD6 SD_CD



R72 should be closed to NUC976 &
C31 should be closed to CN12.

NHS-976-1-IN-1M11

Title		
NUC976_TOMATO		
Size	Document Number	Rev
A	SPI_SD	1.0
Date:	Thursday, April 14, 2016	Sheet 7 of 9

5

4

3

2

1

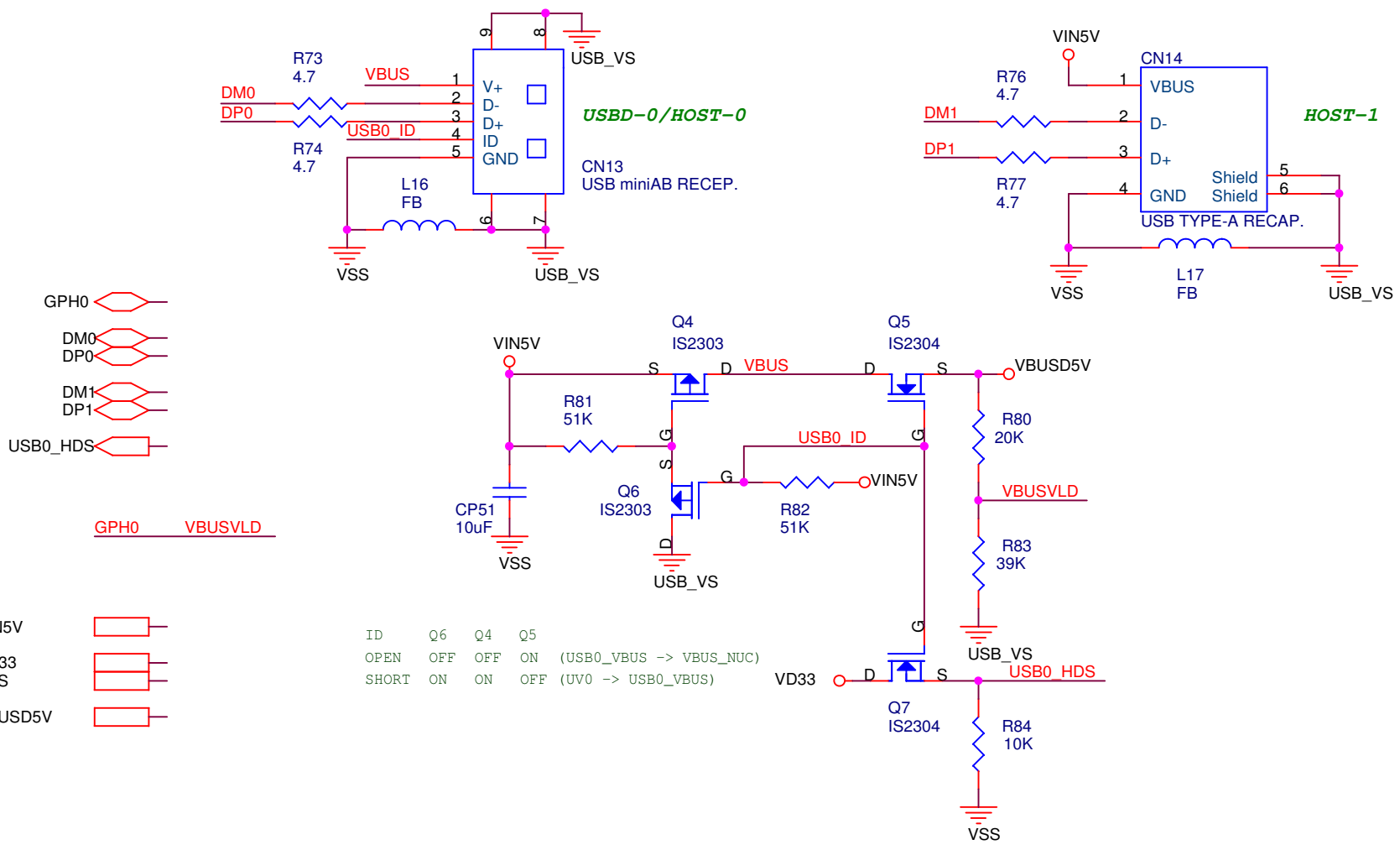
5

4

3

2

1



NHS-976-1-IN-1M11

Title			NUC976_TOMATO		
Size	Document Number				Rev
A	USB				1.0
Date:			Monday, April 18, 2016		
Sheet			8 of 9		

