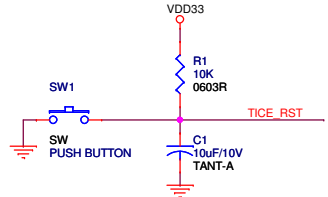
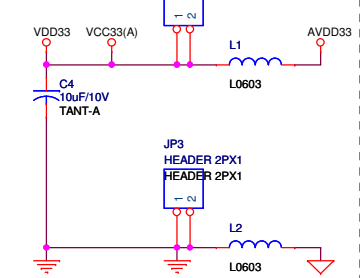




# Reset Circuit

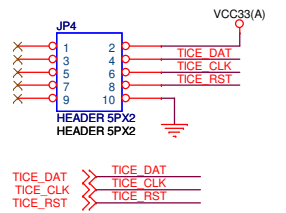


# Power

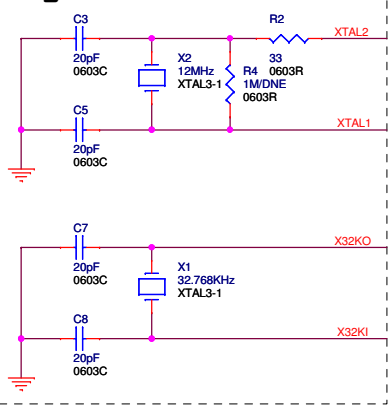


# SWD Interface

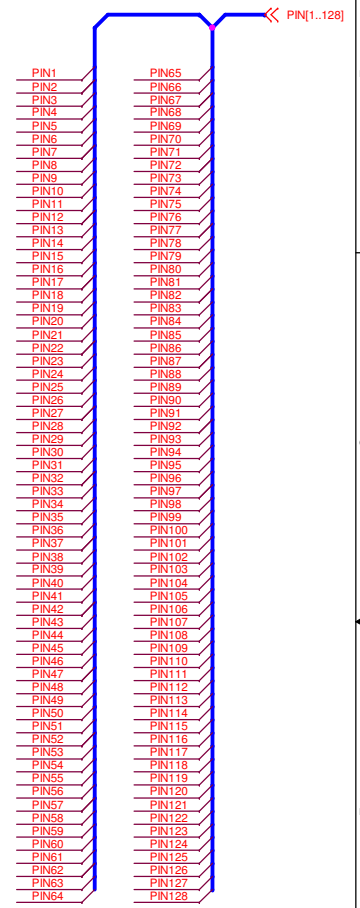
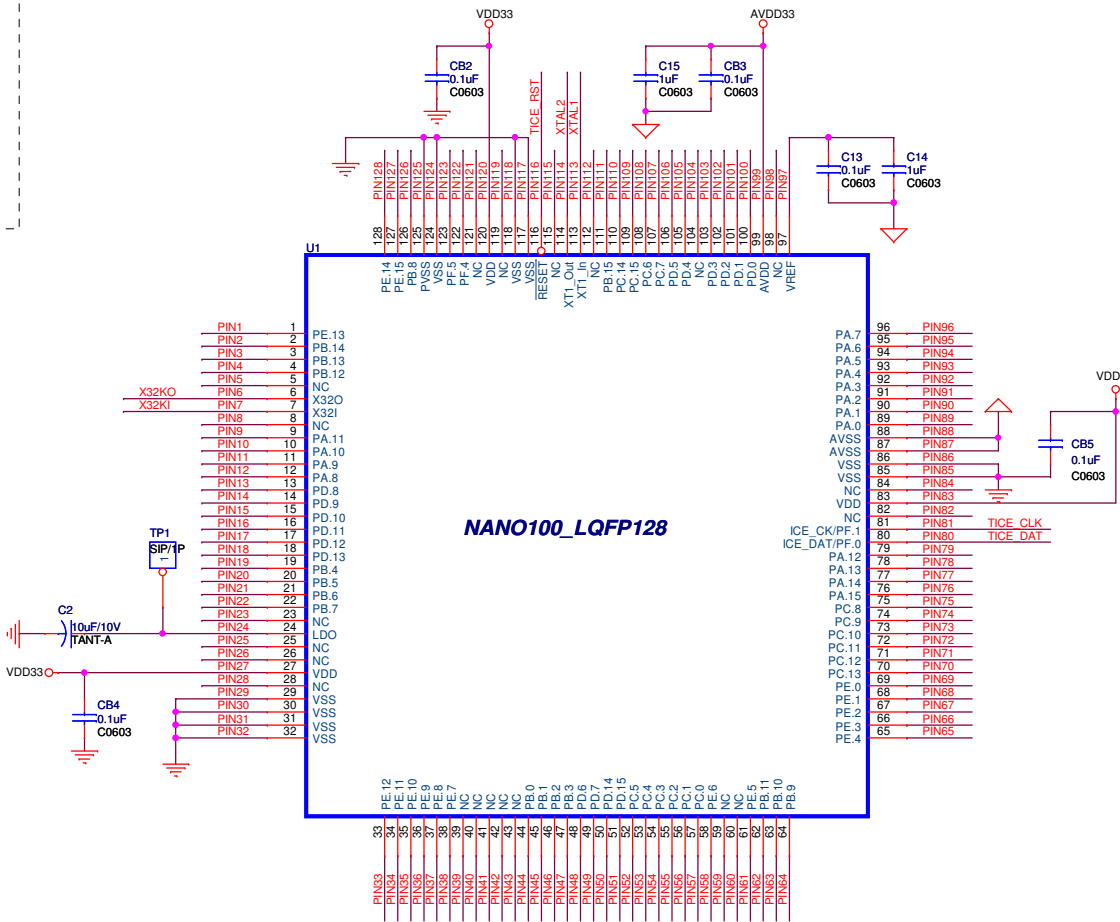
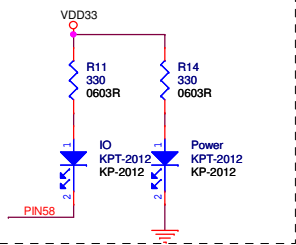
From ICE Bridge's USB Power



# Crystal



# LED



**nuvoTon**

Title

NuTiny-EVB-Nano100-LQFP128 V1.1

Size

Document Number

NANO100KE3BN.SCH

Date:

Friday, September 28, 2012

Sheet

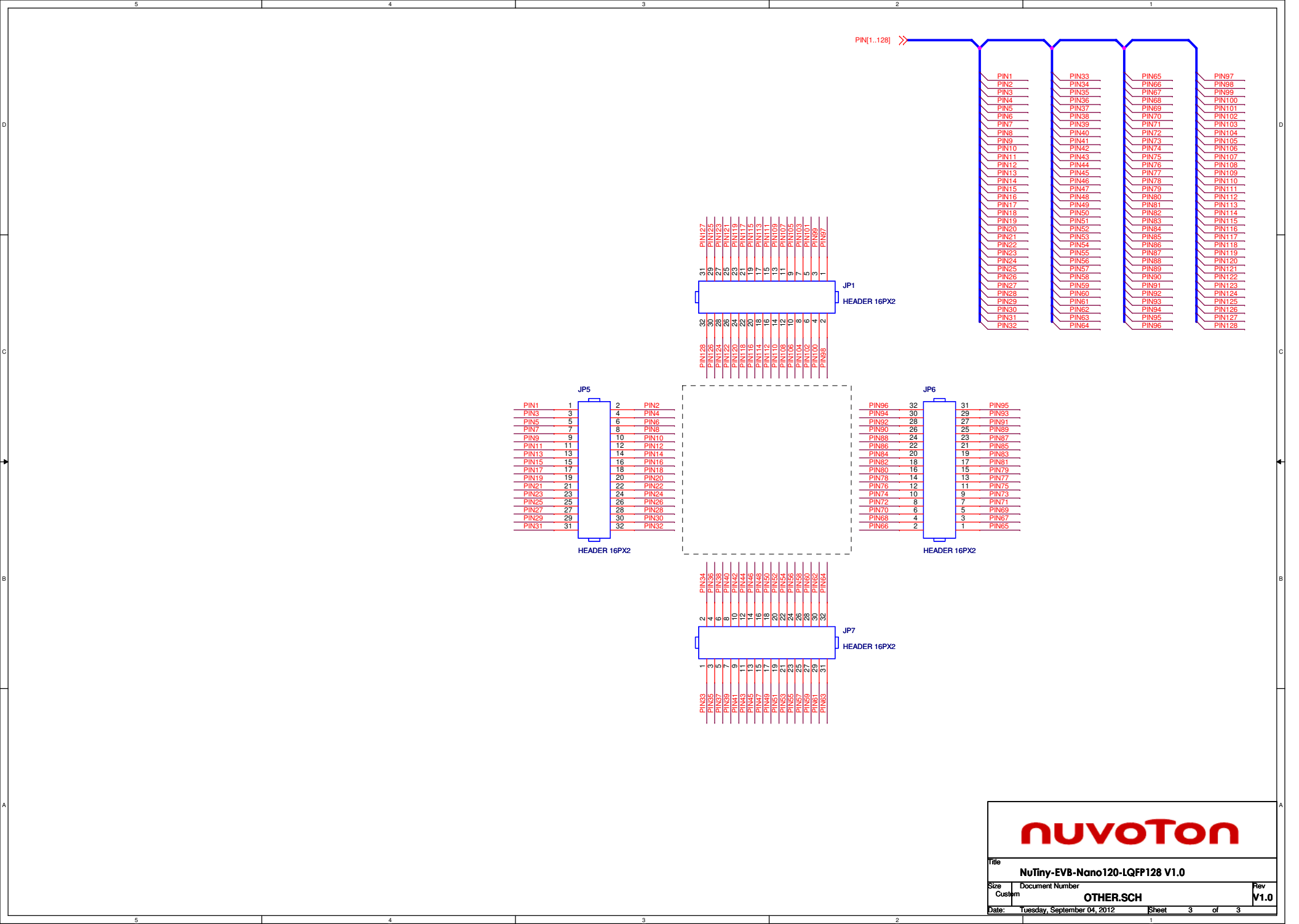
2

of

3

Rev

V1.1



**nuvoTon**

Title				
NuTiny-EVB-Nano120-LQFP128 V1.0				
Size	Document Number			Rev
Custom	OTHER.SCH			V1.0
Date:	Tuesday, September 04, 2012	Sheet	3	of 3